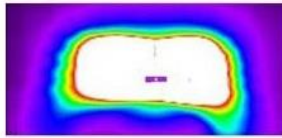


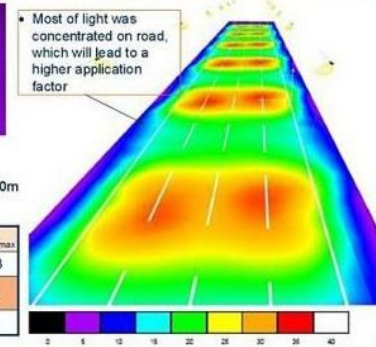
Input Voltage	12V	
Frequency Range	50-60HZ	
(PF)Power Factor	1	
Total Harmonic Distortion	<15%	
Working Voltage	10.0V~15.0V	
LED Consumption	30W	
System Consumption	36W	
LED Luminous Efficiency	>100lm	
LED Initial Flux	3000Lm	
Lamp's Efficiency	>90%	
(E)Edge Illumination	6M height	>45Lux
	8M height	>35Lux
	10M height	>25lux
	12M height	>12lux
Effective Llluminated Area	6M height	6*21m ²
	8M height	8*28m ²
	10M height	10*35m ²
	12M height	12*42m ²
Light Angle	75° x 126°	
Color Temperature	cool white:>6000K	
(CRI)Color Rendering Index	Ra>75	
Light Distribution Curve/Beam Pattern	Asymmetric (Bat Wing /Rectangular Beam)	
(T)Junction Temperature	<105°C	
Working Enviornment	working temperature-35°C-+90°C ; working humidity 10°C-90°C	
IP Rating	IP65	
LED materials	OSRAM LUX W5PM	
Working Life	>50000h	
Light Body &Lampshade Material	Aluminum Alloy	
Net Weight	5.0kg	
Street light Fixture body Size	475*200*70mm	
Packaging Size	490*210*120mm	
Installing Size	Φ 60mm	

Simulation results in Dialux

Simulated beam pattern with single LED



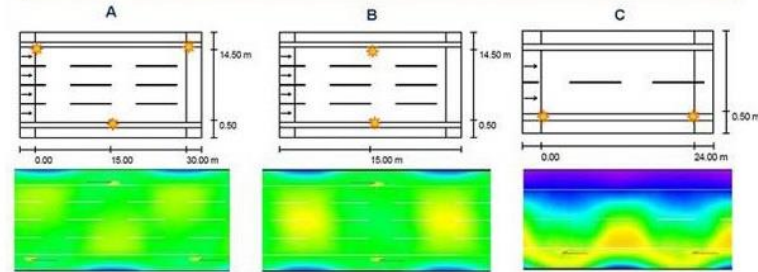
Simulated results with typical street installation



Simulated results @ W=15m, H=10m, D=30m

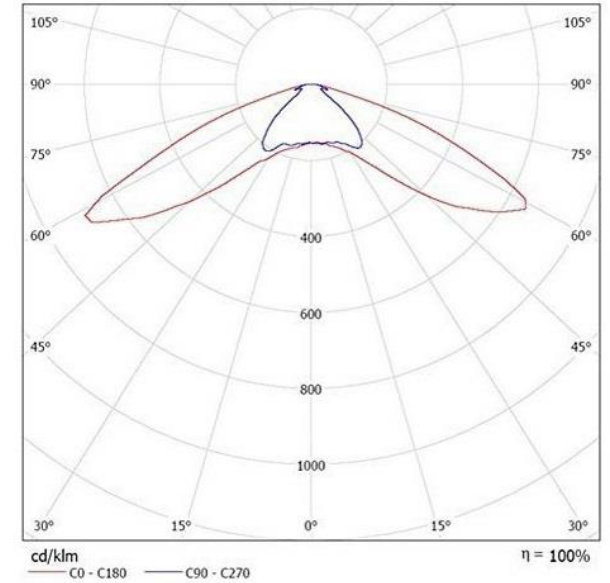
E_{av} [lx]	E_{min}	E_{max}	U_o	E_{min}/E_{max}
24	16	33	0.68	0.48
L_{w} [cd/m ²]	U_o	U_l	T_l [%]	SR
1.3	0.6	0.6	10	0.4

Three typical street lighting installation



- Double row, offset**
 - Width: 15 m (4 lanes)
 - Pole Distance: 30 m
 - Mounting Height: 10 m
 - Overhang : 0.5 m
 - Boom Angle : 15 °
- Double row, opposing**
 - Width: 15 m (4 lanes)
 - Pole Distance: 30 m
 - Mounting Height: 10 m
 - Overhang: 0.5 m
 - Boom Angle : 15 °
- Single row**
 - Width: 10 m (2 lanes)
 - Pole Distance: 30 m
 - Mounting Height: 10 m
 - Overhang : 0.5 m
 - Boom Angle : 15 °

Lamps: 1 x 105lm



Luminaire: Osram Opto Semiconductors 30W Rev0 LUW_W5PM 20W Rev0 Golden DRAGON oval Plus 30W Rev0
Lamps: 1 x 105lm

